

# THE REST OF THE AMC FAMILY



## Steel / Insulated Throat - 105°C

Catalog Number	K.O. Size	Flex Trade Size	AC/MC Cable Range		Throat Opening	Unit Qty.	Std. Pkg.
			Min.	Max.			
AMC-50	1/2"	3/8"	14/2 (.40")	10/3 (.62")	.375"	50	500
AMC-5075	1/2"	1/2"	10/4 (.62")	6/4 (.92")	.565"	25	250
AMC-52	1/2"	3/8"	14/2 (.43")	10/3 (.62")	.560"	25	250
AMC-75	3/4"	3/4"	10/3 (.56")	6/3 (.81")	.560"	25	100

- Tri Drive Screws
- Zinc Plated Steel
- 105°C Insulated Throat
- cULus Listed File No. E20534
- Patented

# SEE THE DIFFERENCE THE NEW AMC-50QI



 **BRIDGEPORT**  
www.bptfittings.com

Printed in the U.S.A.

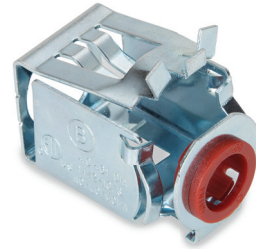
© 2016 Bridgeport Fittings, Inc. All rights reserved. 1/16 7500 BP-STD



# AMC-50QI E-Z LOCK™ QUICK INSTALL CONNECTORS



- Lever action
- Easy in; Easy out
- Square design requires less effort to install
- Open pass-through eliminates damage to conductors
- Prefab alternative
- Patented



## AMC-50QI Quick Install Connectors

The AMC-50QI is a zinc plated steel quick install connector, used to connect 14/2 to 10/3 (.40" - .61" diameter) AC/MC/MCI-A/HCF/HCFMCI-A and 3/8" FMC cable to box or enclosure. No tools required. Simply snap the connector onto the cable, squeeze the lever and set into the knockout.

cETLus Listed

### Zinc Plated Steel

Catalog Number	K.O. Size	Fixed Trade Size	Unit Qty.	Std. Pkg. Qty.
AMC-50QI	1/2"	3/8"	50	500

FOR MORE INFORMATION, VISIT:  
[WWW.BPTFITTINGS.COM](http://WWW.BPTFITTINGS.COM)

FOR MORE INFORMATION, VISIT:  
[WWW.BPTFITTINGS.COM](http://WWW.BPTFITTINGS.COM)